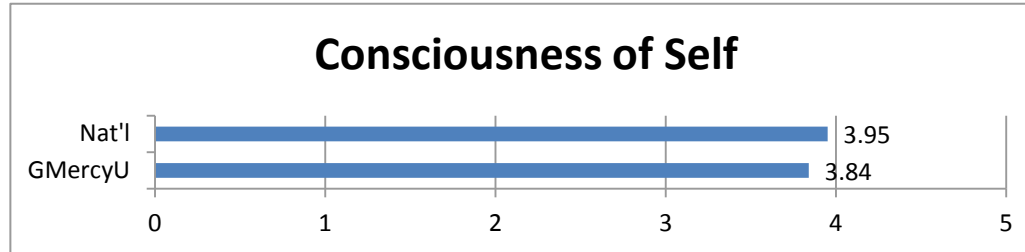
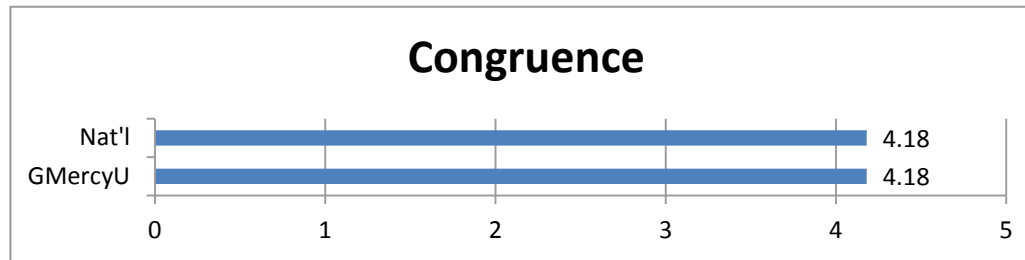


AY2013-2014 "Student Leadership" Assessment Results

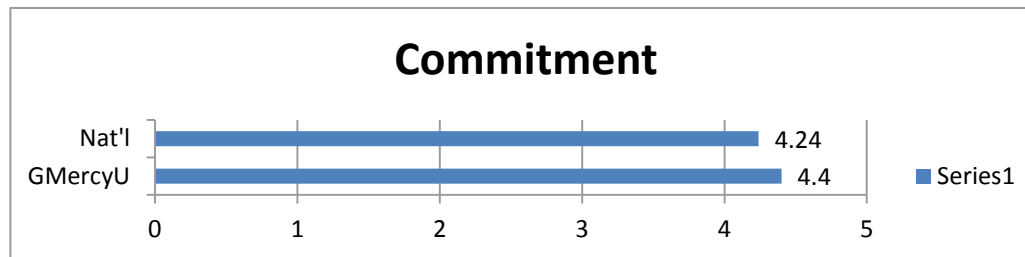
Consciousness of Self -- Awareness of the beliefs, values, attitudes, and emotions that motivate one to take action.



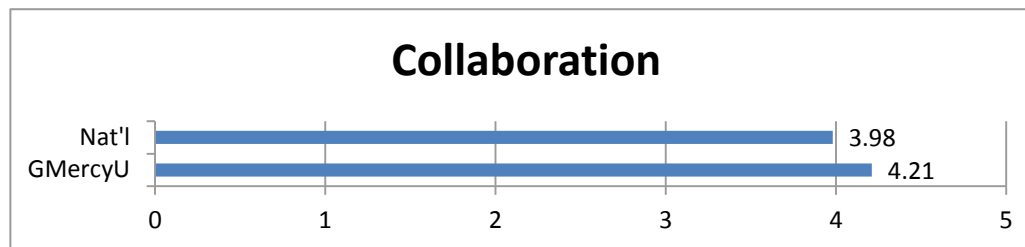
Congruence -- Thinking, feeling, and behaving with consistency, genuineness, authenticity, and honesty towards others; actions are consistent with most deeply-held beliefs and convictions.



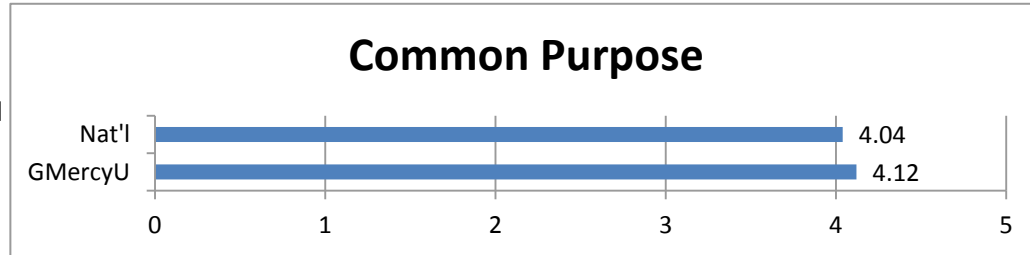
Commitment -- The psychic energy that motivates the individual to serve and that drives the collective effort; implies passion, intensity, and duration, and is directed toward both the group activity as well as its intended outcomes.



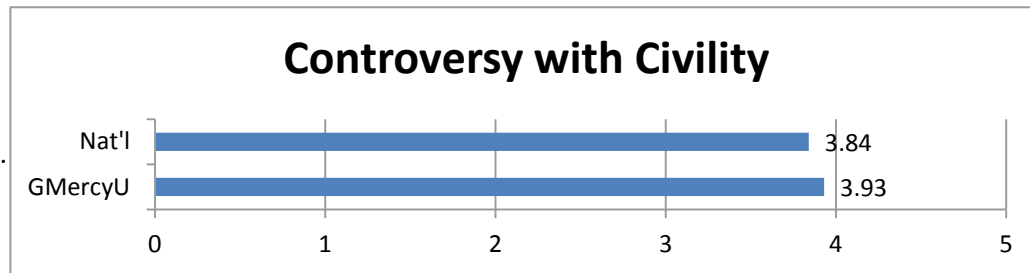
Collaboration -- To work with others in a common effort; constitutes the cornerstone value of the group leadership effort because it empowers self and others through trust.



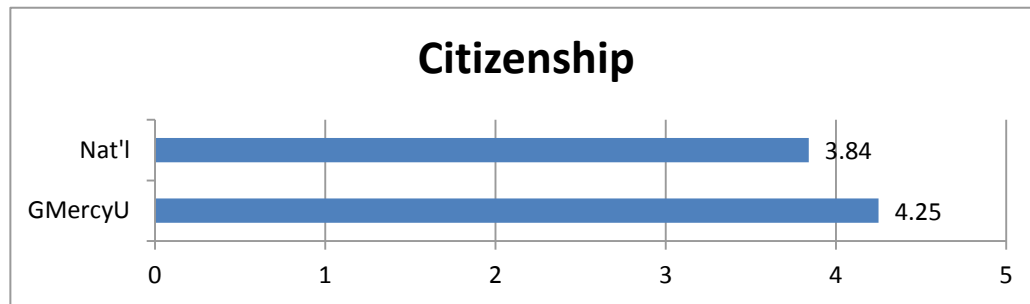
Common Purpose -- To work with shared aims and values; facilitates the group's ability to engage in collective analysis of issues at hand and the task to be undertaken.



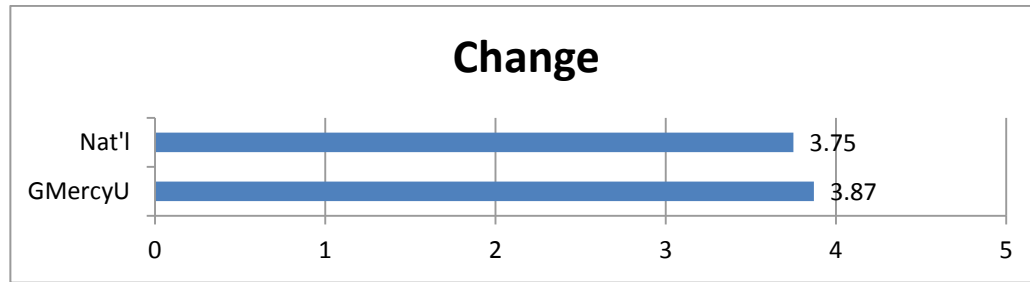
Controversy with Civility -- Recognizes two fundamental realities of any group effort: differences in viewpoint are inevitable, that such differences must be aired openly, but with civility. Civility implies respect for others, a willingness to hear each other's views, and restraint in criticizing others.



Citizenship -- The process whereby an individual and the collaborative group become responsibly connected to the community and the society through the leadership development activity. To be a good citizen is to work for positive change on the behalf of others and the community.



Change -- The ability to adapt to environments and situations that are constantly evolving, while maintaining the core functions of the group.



*SRLS Instrument: Socially Responsible Leadership Scale

Spring 2014

40 Capstone students surveyed; random/stratified sample according to discipline

70% female; 30% male

70% white; 25% African American; 2.5% Asian; 2.5% Unkown; 0% all other categories

70% commuter; 30% resident

Please note: Precision of the comparison of the weighted averages for GMercyU cannot be fully confirmed because the exact weighting of each factor for National averages was not available.

